

Global Risks Report 2026

Activation Toolkit

January 2026
Group Communications & Public Affairs

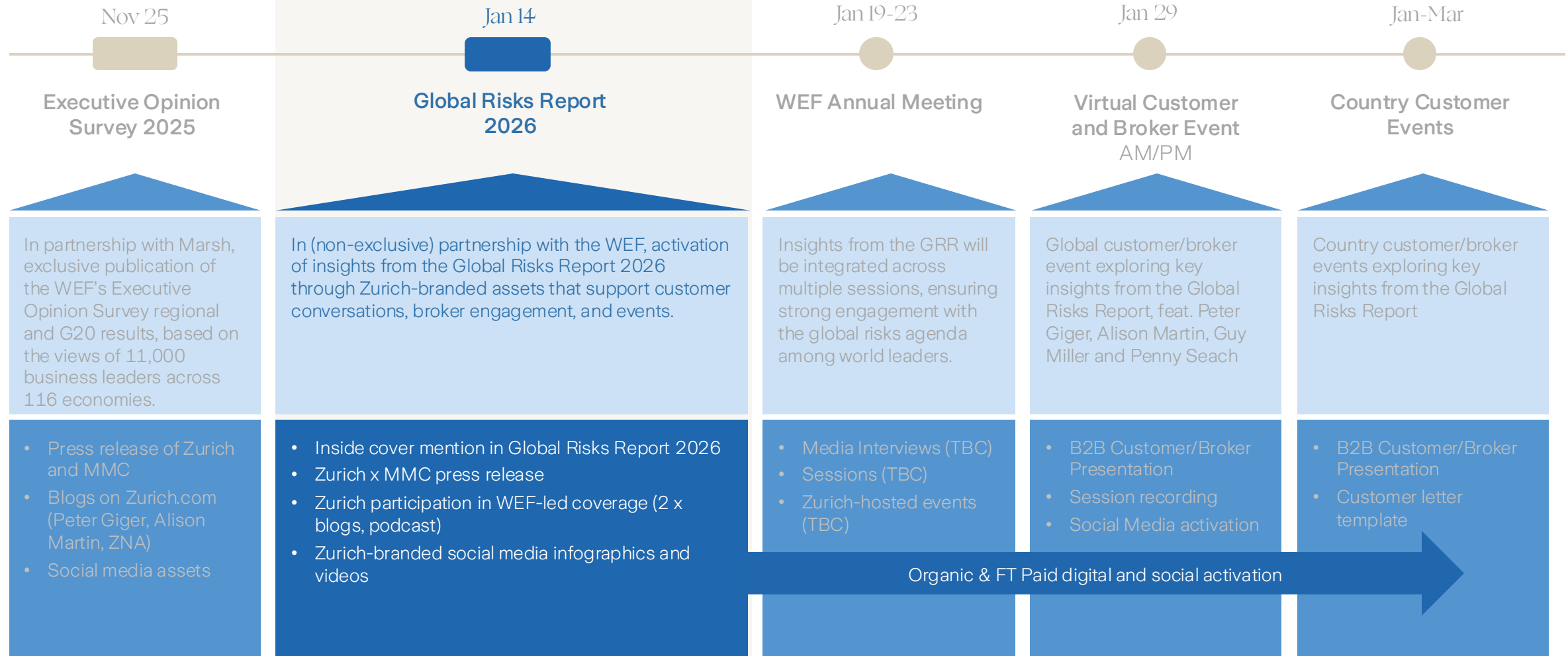


WEF Executive Opinion Survey / Global Risks Report

Activation overview



Business resilience



Content overview

Assets and social copies (1/2)



Download the assets [here](#)



Top short- and long-term risks

Feat. Peter Giger (Chief Risk Officer)

Video

The WEF’s Global Risks Report 2026 is here! Goeconomic confrontation and extreme weather events preoccupy leaders from around the world.

But the biggest threat? Well, it’s not always what’s right in front of us. Read more here: [link](#) #GRR26

Are you a news junkie like me and look forward to the World Economic Forum’s Global Risk Report every year? Well, the new edition is just out and is as fascinating as ever.

Goeconomic confrontation and extreme weather events preoccupy leaders from around the world.

But the biggest threat? It’s not always what’s right in front of us. Read more here: [link](#) #GRR26



Why critical infrastructure is a ticking time bomb

Authored by Peter Giger (Chief Risk Officer)

Article, Infographics

The WEF’s Global Risks Report 2026 is out now. With continued climate concerns, ongoing geopolitical tension, and new cyber threats, the report warns of an emerging “age of disorder.”

Yet risks to critical infrastructure like energy, water, and digital systems remain overlooked.

Read our Chief Risk Officer Peter Giger’s blog on why resilience starts with reinforcing these critical foundations. [link](#) #GRR26

I look forward to the World Economic Forum’s Global Risk Report every year. The latest edition warns of an emerging “age of disorder” – with continued climate concerns, ongoing geopolitical tension, and new cyber threats.

But risks to critical infrastructure like energy, water, and digital systems remain overlooked.

Read our Chief Risk Officer Peter Giger’s blog on why resilience starts with reinforcing these critical foundations. [link](#) #GRR26



Why personal resilience belongs in the boardroom (Live January 21st)

Authored by Alison Martin (CEO Life, Health and Bank Distribution)

Article, Infographics

The WEF’s Global Risks Report 2026 warns of inequality and societal polarization as key risks over the next two years.

Building personal resilience is key – empowering us all to navigate these uncertainties with more confidence.

Discover why Alison Martin believes personal resilience should be at the top of every business leader’s agenda. [link](#) #GRR26

Inequality and societal polarization are some of the big challenges highlighted in the WEF’s Global Risks Report 2026. Personal resilience needs to be a priority, for ourselves and for our teams.

Read this blog by our own Alison Martin reflecting on this year’s findings and practical ways forward for business leaders everywhere. [link](#) #GRR26

Social

Advocacy

Content overview

Assets and social copies (2/2)



Download the assets [here](#)



Top 10 short-term risks (over two-year horizon)

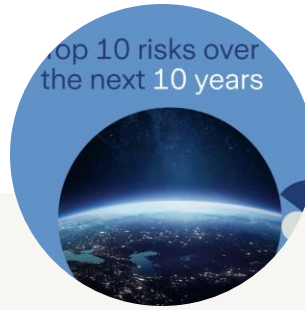
Carousel, Static Version

What risks are shaping the worldwide agenda right now?
The WEF's Global Risks Report 2026 highlights goeconomic confrontation, misinformation, and societal polarization as being the defining challenges over the next two years.

But among a crowded horizon, our Chief Risk Officer Peter Giger looks beyond these short-term risks to those that may be missing. [link](#) #GRR26

The annual WEF Global Risks Report looks at both short-term risks and long-term risks. According to the newly-released 2026 report, goeconomic confrontation, misinformation, and societal polarization will be defining challenges over the next couple of years.

But what I find most interesting are the risks that we may be overlooking. Our Chief Risk Officer Peter Giger reflects on how we can deal with these issues today. [link](#) #GRR26



Top 10 long-term risks (over ten-year horizon)

Carousel, Static Version

Curious about the realities of long-term global risks?

The newly published WEF Global Risk Report 2026 shows that, over the next decade, leaders remain deeply concerned about extreme weather events and biodiversity loss — issues with the potential to reshape economies and societies worldwide.

Our Chief Risk Officer Peter Giger writes about what it takes to build resilience in an increasingly uncertain times. [link](#) #GRR26

The annual World Economic Forum's Global Risk Report is always thought-provoking. With the 'long-term risks' — like extreme weather events and biodiversity loss — appearing year after year, it's clear that what once felt distant is moving closer.

Our Chief Risk Officer Peter Giger writes about what it takes to build resilience in an increasingly uncertain times. [link](#) #GRR26



WEF Podcast - Jan 12 recording (CRO – Peter Giger)

WEF Page, Audio

TBD

Social

Advocacy

Thank you!

Group Thought Leadership

